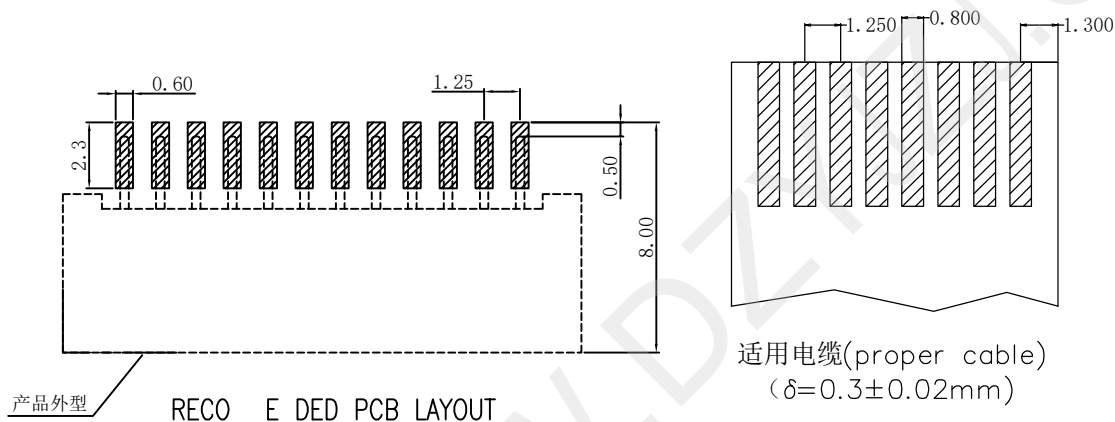
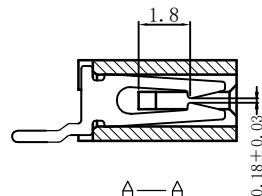
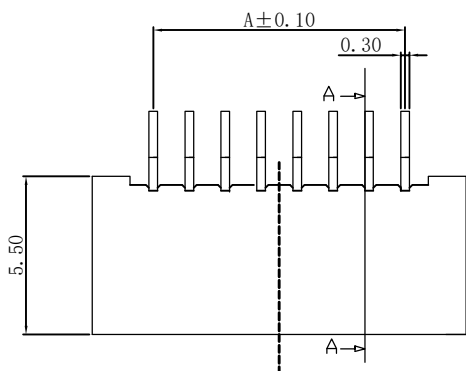
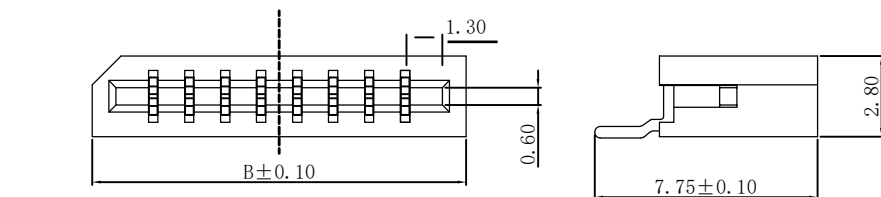


规格尺寸		
极数	A	B
3P	2.50	6.75
4P	3.75	8.00
5P	5.00	9.25
6P	6.25	10.50
7P	7.50	11.75
8P	8.75	13.00
9P	10.00	14.25
10P	11.25	15.50
11P	12.50	16.75
12P	13.75	18.00
13P	15.00	19.25
14P	16.25	20.50
15P	17.50	21.75
16P	18.75	23.00
17P	20.00	24.25
18P	21.25	25.50
19P	22.50	26.75
20P	23.75	28.00
21P	25.00	29.25
22P	26.25	30.50
23P	27.50	31.75
24P	28.75	33.00
25P	30.00	34.25
26P	31.25	35.50
27P	32.50	36.75
28P	33.75	38.00



产品外型 RECO E DED PCB LAYOUT

技术参数 SPECIFICATIONS

间距 (Pitch) : 1.25

极数 (Poles) : 3~28P

额定电压 (Voltage rating): 50V DC/AC

额定电流 (Current rating) : 0.5A DC/AC

耐压值 (Withstand Voltage) : 500VAC/m

工作温度 (Working Temperature) : -25℃ ~ +85℃

绝缘电阻 (Insulation Resistance) : ≥500MΩ

接触电阻 (Contact resistance) : ≤30mΩ

双面接触 (Double-sided contact)

2	Contact	Phosphor Bronze	n*1	亮锡
1	Housing	LCP	1	
序号	名称	材料	数量	附注



深圳市华宇创精密电子有限公司

TOLERANCE: X.X ±0.30 X.XX ±0.25 X.XXX ±0.15 X' ±2' X.X' ±0.5'	DRAWN BY : 陈一鸣	DATE : 2014-02-23	PART NAME: 1.25PH 卧式贴板
	CHECKED BY: 马跃	DATE : 2014-02-23	PART NO. : HYC2E7-125FPCXX-280
UNIT: mm [inch] SCALE:1:1 SIZE: A4	APPROVED BY: 邱敏	DATE : 2014-02-23	DRAW NO. : HYC-2603171441
			SHEET NO. : 1 OF 1